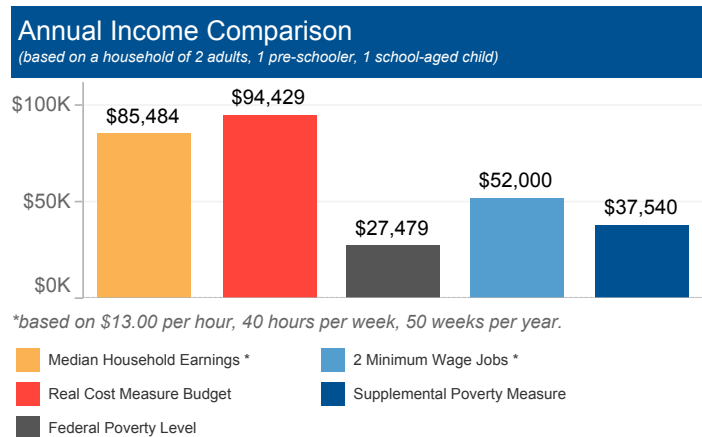


Monterey County The Real Cost Measure in California 2023

The Real Cost Measure (RCM) estimates the amount of income required to meet basic needs including the costs of housing, child care, food, transportation, health care, and taxes. Unlike the official poverty measure which is primarily calculated based on the cost of food adjusted for inflation annually, the Real Cost Measure takes into account geographical differences in the cost of living throughout California.

If any results show blank values, that indicates the sample size is too small to illustrate Real Cost Measure results. Per our methodology, estimates with a cell size of greater than 5,000 are assumed to be accurate within +/-1% based on design factor analysis. Cell sizes less than 5,000 are suppressed.

# of Households below Real Cost Measure	% of Households below Real Cost Measure	% of Households below Real Cost Measure with at least 1 Working Adult
42,835	38%	96%



Household Budgets

	1 Adult	2 Adults	2 Adults, 1 Pre-schooler, 1 School-aged child
Housing	\$16,176	\$17,592	\$21,516
Food	\$4,608	\$8,448	\$13,056
Health Care	\$2,724	\$5,436	\$10,872
Child Care	\$0	\$0	\$16,260
Transportation	\$5,988	\$11,976	\$11,976
Miscellaneous	\$2,952	\$4,344	\$7,368
Taxes/Credits	\$6,104	\$7,490	\$13,381
FINAL BUDGET	\$38,552	\$55,286	\$94,429

Households of Color

Across the county, African Americans and Latinos have a disproportionate number of households with incomes below the Standard. In this area, of the 42,835 households below the Real Cost Measure, 29,788 are Latino.

Households with Young Children

- 64% of households with children under six struggle, a rate much greater than that of the rest of the county.
- Single mothers are most likely to struggle. 69% in the county are below the Real Cost Measure.

Working Households

- 96% of households below RCM have at least one working adult.
- 68% of heads of household who work are employed full time and year round.
- A family of four (2 adults, 1 infant, 1 school-aged child) would need to hold more than 3 full time, minimum-wage jobs to achieve economic security.**

Housing Burden

- 42% of all households in the county spend more than 30% of their income on housing.

Education

	# below RCM	% below RCM
Less than High School	15,125	69%
High School Diploma or Equivalent	9,677	49%
Some College, Assoc. or Voc.	11,513	38%
Bachelor's degree or higher	6,519	16%

Ethnicity

	# below RCM	% below RCM
Latino	29,788	54%
African American		
Asian American / Pacific Islander		
White	9,945	21%
Native American/Alaska Native		

Household Type

	# below RCM	% below RCM
Single Mothers	7,190	69%
Seniors	6,318	28%
Married Couples	18,332	38%
Informal Families	5,159	26%

Citizenship/Nativity

	# below RCM	% below RCM
Foreign Born, Non-Citizen	18,285	67%
Foreign Born, Naturalized		
Born a US Citizen	20,230	28%

** Minimum waged jobs based on \$13.00 per hour, 40 hours per week, 50 weeks per year. Median household earnings control for elder-led households and household led by persons with disabilities consistent with the Real Cost Measure.